

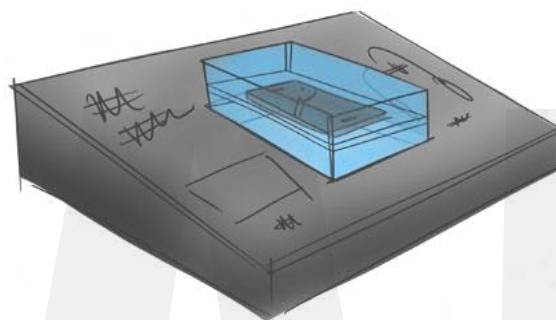
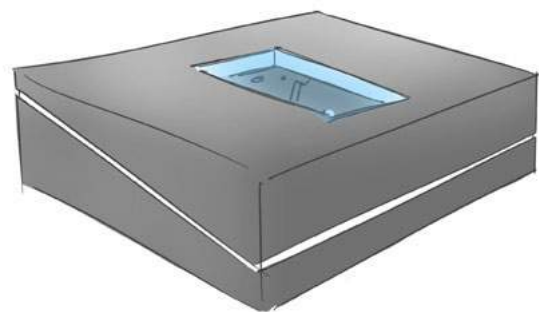
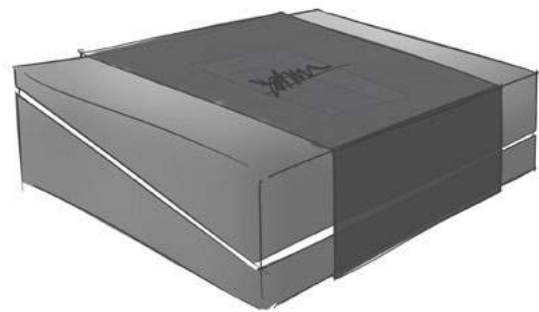


HELLO. MY NAME IS TAMMY.

I WAS BORN AND RAISED IN OHIO. I'VE ALSO LIVED IN TAIPEI AND BERLIN. I LOVE MINIATURE THINGS AND I'M A GEEK ABOUT DESIGNERLY THINGS LIKE CLARITY, PRECISION & EFFICIENCY.

DEVICE LAUNCH VIP/INFLUENCER KIT

CLIENT: SAMSUNG



CONCEPT SKETCHES



FINAL VIP KIT



NYFW FASHION SHOW LOOKBOOK

CLIENT: FRITO-LAY



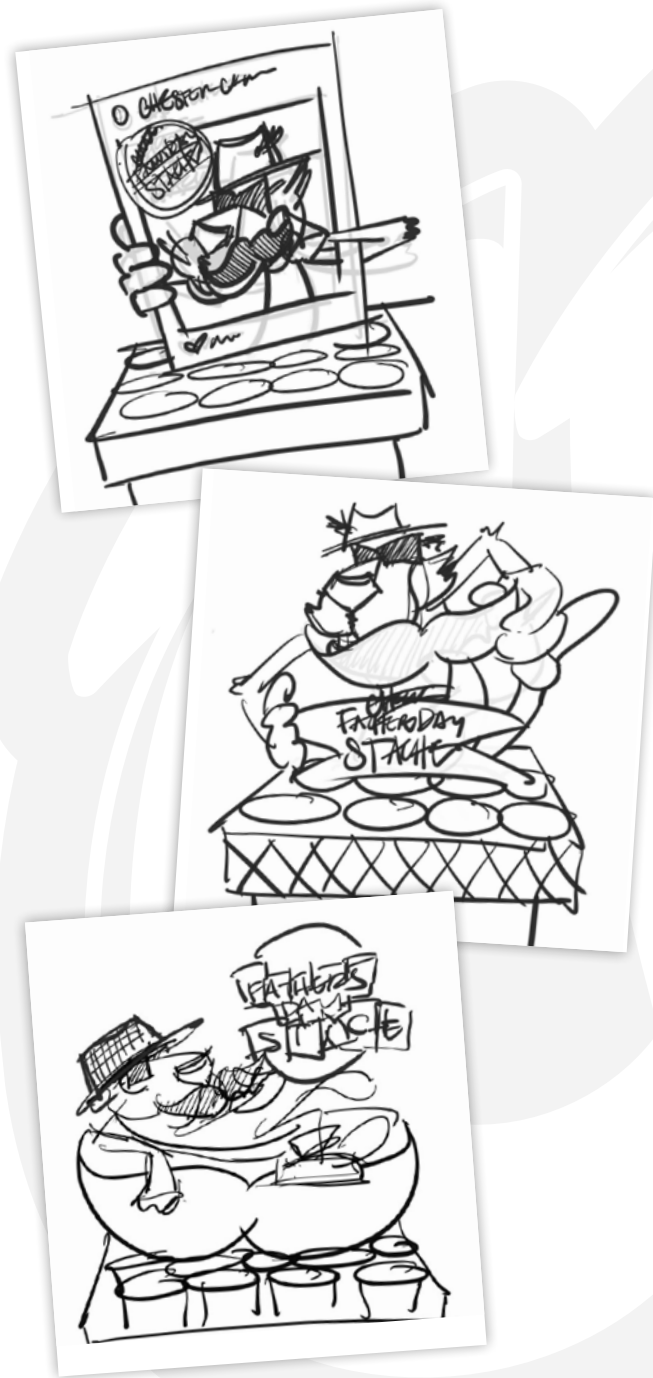
DUAL-COVER BOOKLET CONCEPT



INTERIOR SPREADS

FATHER'S DAY IN-STORE DISPLAY

CLIENT: FRITO-LAY



CONCEPT SKETCHES



3D RENDERING



PROGRAM LOCKUP



SIDE PANEL

ABSOLUT PRIDE IN-STORE POS

CLIENT: PERNOD RICARD



KEY VISUAL / POSTER



1 CASE BIN DISPLAY



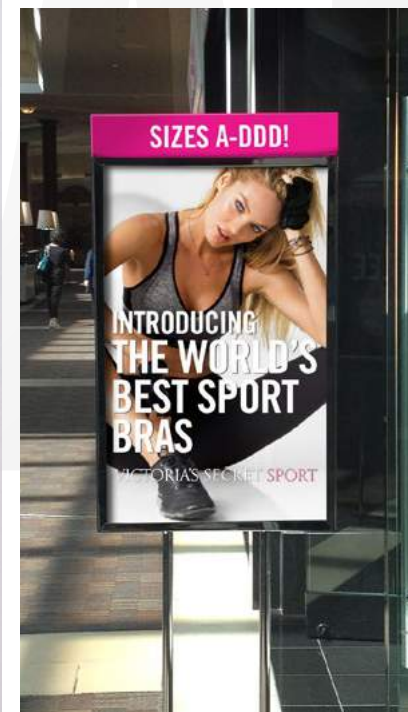
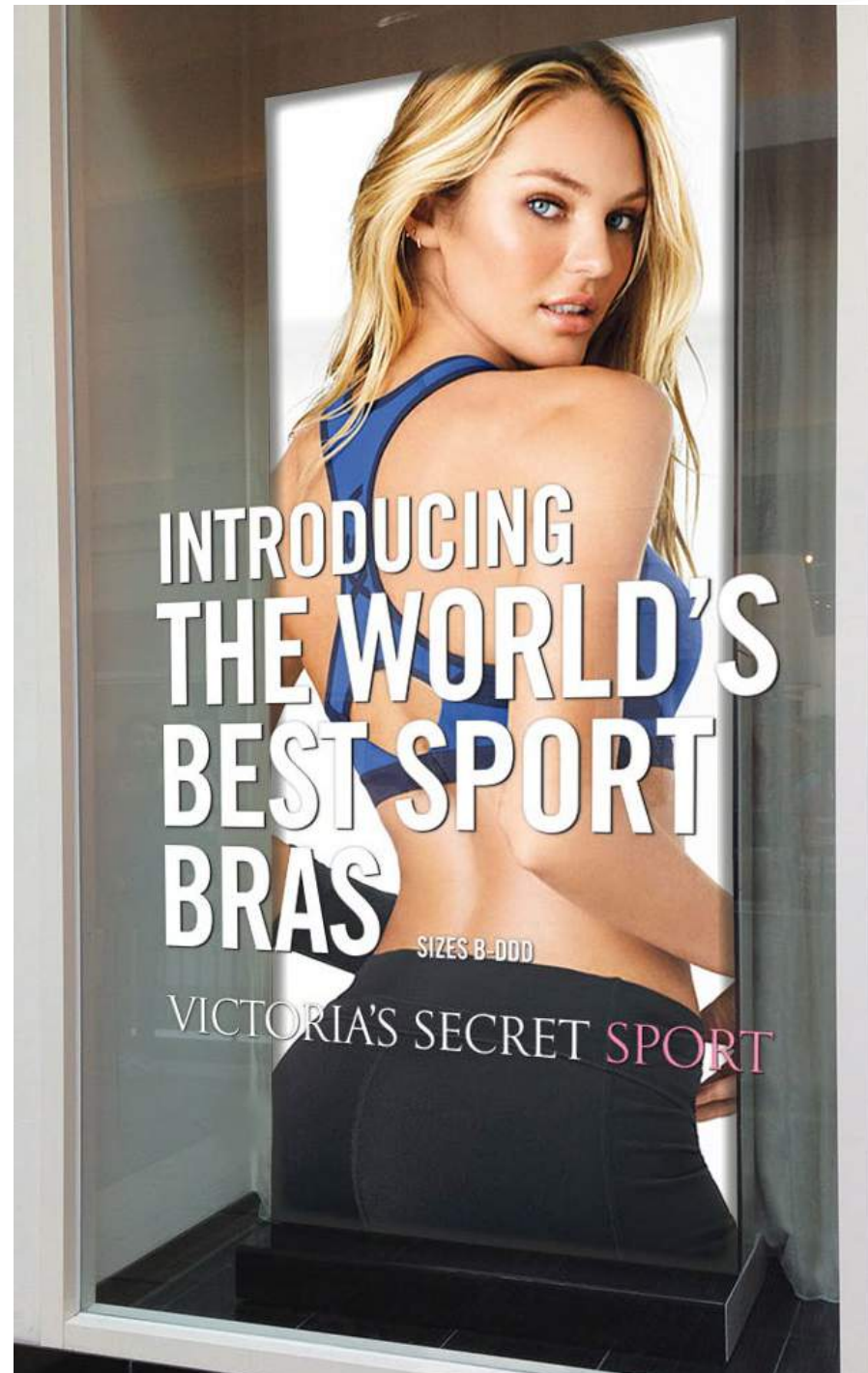
BOTTLE RECIPE HANGTAG



TABLE TENT

INTRODUCING THE WORLD'S BEST SPORT BRAS

CLIENT: VICTORIA'S SECRET



WINDOW DISPLAYS

TOP: HERALD SQUARE NYC BUILDING WRAP / BOTTOM: IN-STORE SIGNAGE

THE WORLD'S BEST SPORT BRAS

The most essential part of your workout wardrobe, designed for performance perfection. Plus, every style features ultra-breathable fabric and Body-Wick technology to keep you cool & dry!

	MAXIMUM SUPPORT			MEDIUM SUPPORT				MINIMUM SUPPORT	
INCREDIBLE	VS PRO	THE STANDOUT	ANGEL	SHOWTIME	VS RUNWAY	STUDIO	THE PLAYER RIBBONBACK	THE PLAYER CAMI	
32-36B-DDD, 38C-DD	34-36C-DDD, 38C-DD	32B, 34-36B-DD, 38D	32-36B-D	32A-B, 34A-C, 36B-C	32B-C, 34A-D, 36B-C	S-L	S-L	S-L	
COLORS									
FEATURES	<ul style="list-style-type: none"> Concealed wire for cushioned support Padded straps & bonded, seamless technology that eliminates irritation Super-soft elastic band for comfort & movement Cushioned, adjustable back closure 	<ul style="list-style-type: none"> Lightly lined Underwire for additional support Wear it classic & crossback with adjustable padded straps Adjustable back closure 	<ul style="list-style-type: none"> Gel underwire for shape & support Adjustable, padded straps with hidden pocket Super-soft elastic band for comfort & movement Adjustable back closure 	<ul style="list-style-type: none"> Memory Fit conforms to your shape Underwire for additional support Adjustable back closure 	<ul style="list-style-type: none"> Padding lifts & shapes Concealed wire for cushioned support Halter-like styling with padded straps Adjustable back closure 	<ul style="list-style-type: none"> Wireless support Padding lifts & shapes Breathable mesh panels Adjustable back closure 	<ul style="list-style-type: none"> Adjustable racerback straps Seamless comfort & zoning for support Removable padding for support & shape Nylon microfiber & spandex fabric for ultimate stretch 	<ul style="list-style-type: none"> Super-soft elastic band for comfort & movement Breathable mesh back 	<ul style="list-style-type: none"> Adjustable straps Super-soft elastic band for comfort & movement Breathable mesh back

VICTORIA'S SECRET SPORT



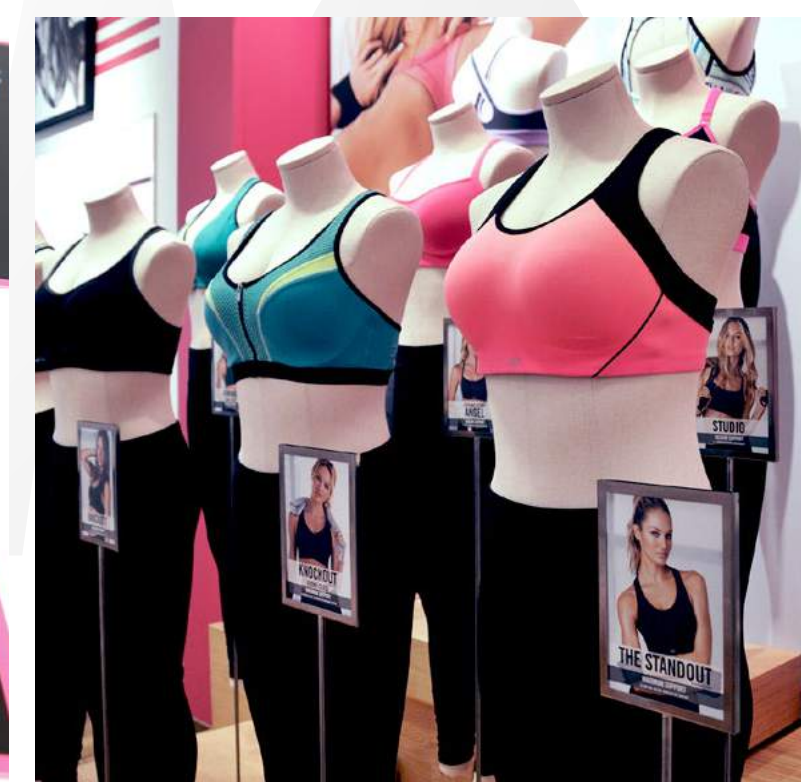
PRODUCT OFFERING & STYLE GUIDE



FITTING ROOM TAKE-AWAY CARDS



EMPLOYEE LANYARD CARDS



MANNEQUIN DESCRIPTOR SIGNAGE

FARMER'S MARKET COLLECTION INFLUENCER EVENT

CLIENT: YANKEE CANDLE



EVENT POSTER



COCKTAIL RECIPE CARD



DINNER MENU

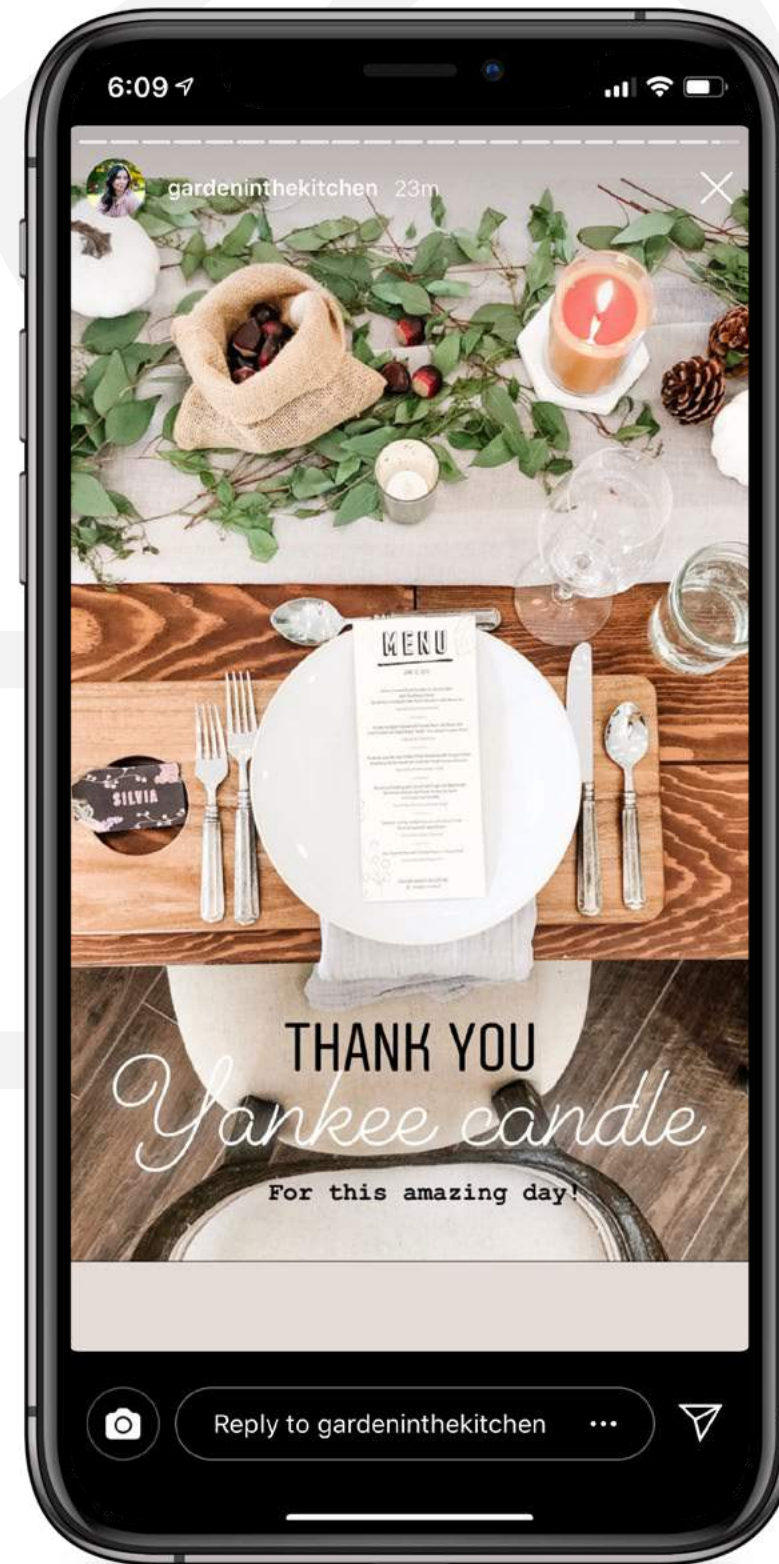
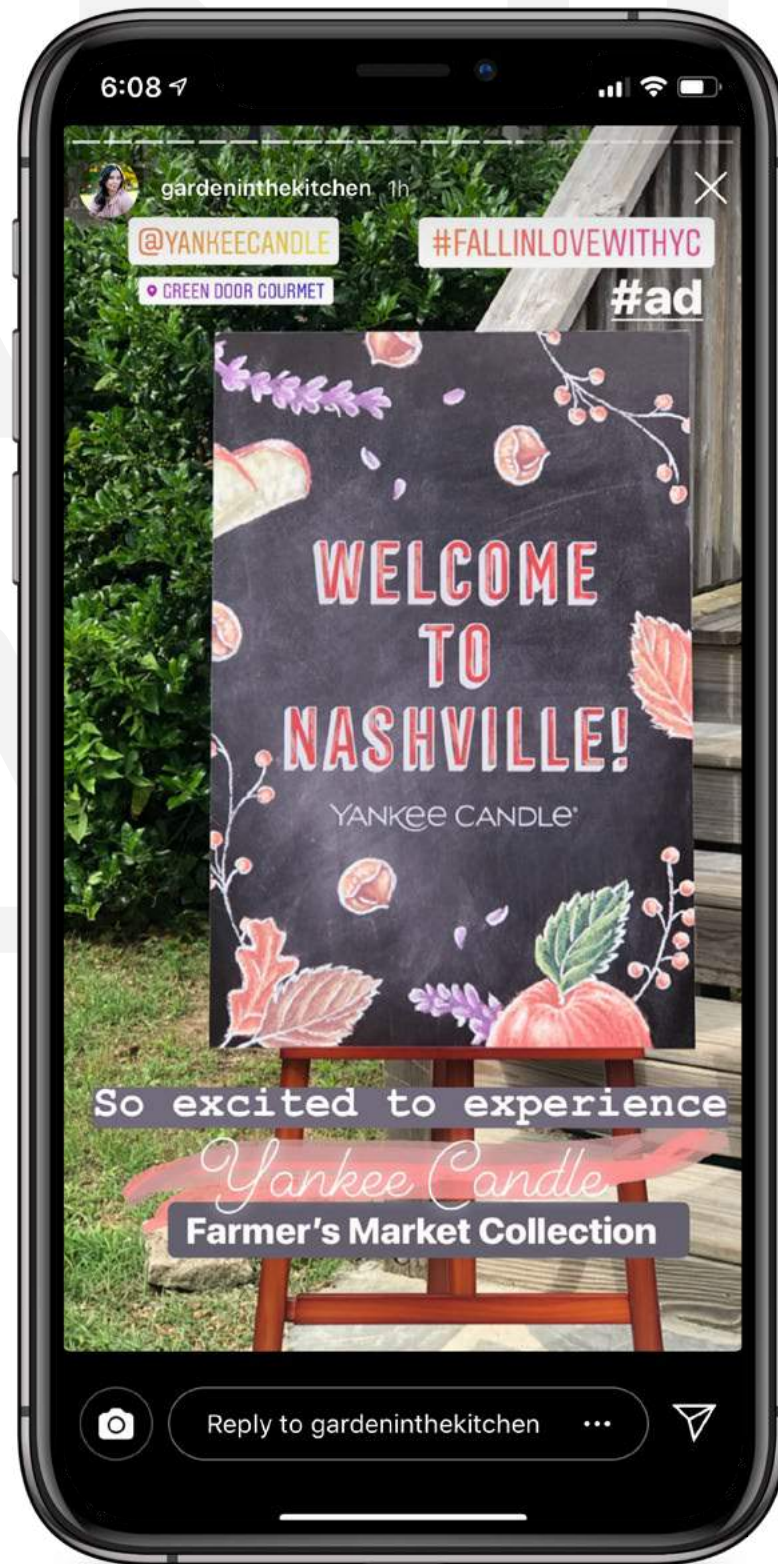


BI-FOLD EVENT PROGRAM





EVENT PHOTOS



INFLUENCER CONTENT

SUPER MARIO MAKER 2 EVENT ACTIVATION

CLIENT: NINTENDO

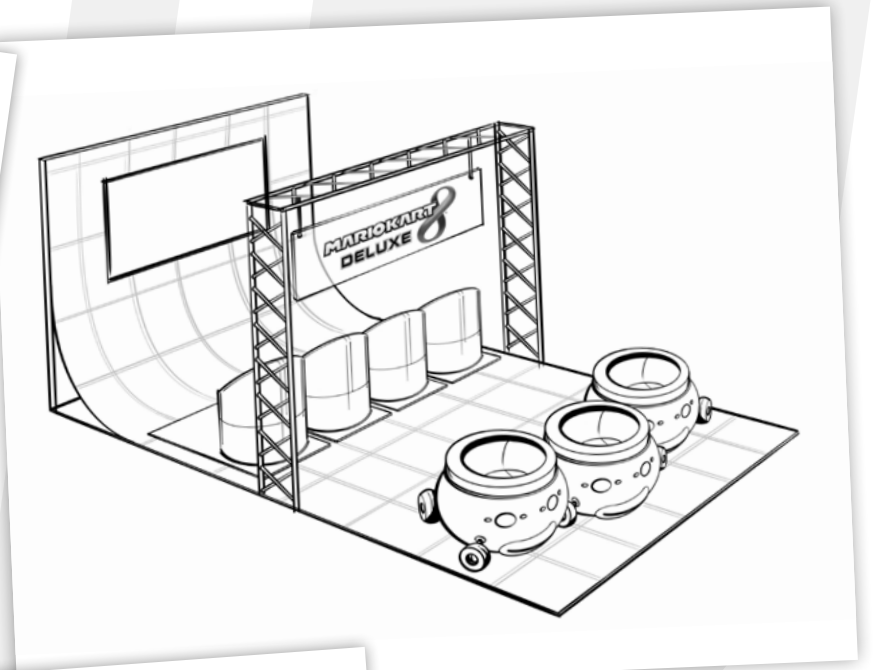
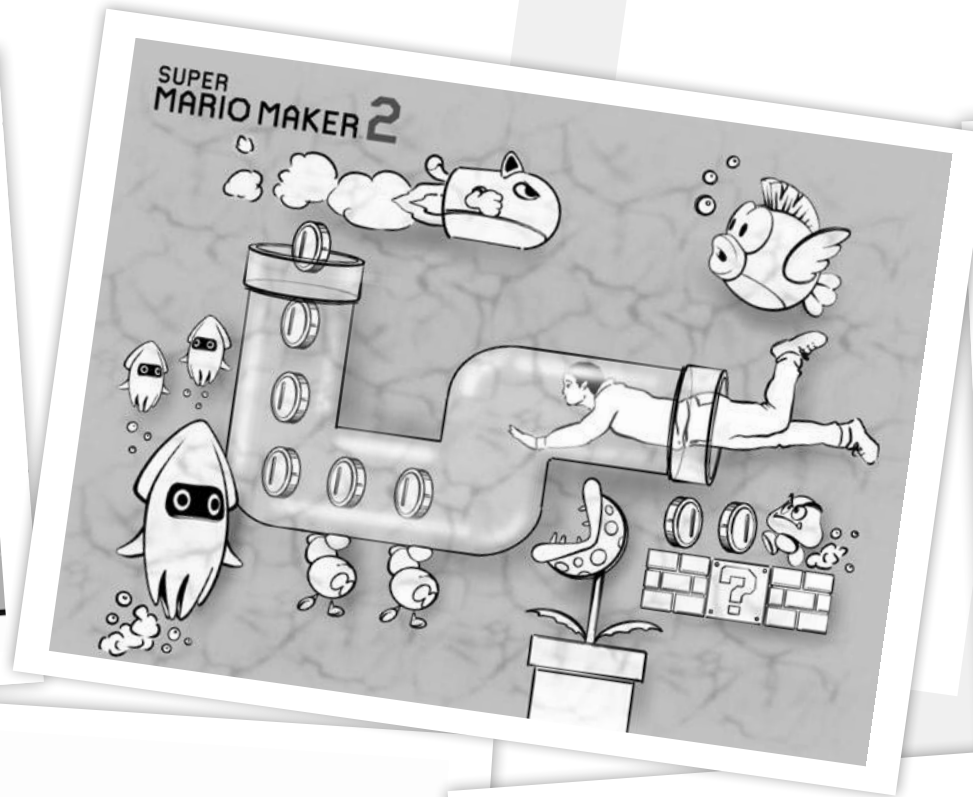


PHOTO OP AREAS



MOBILE EVENT VEHICLES



THE ONLY WAY TO DO
**GREAT
 WORK**
 IS TO LOVE WHAT YOU DO

Design requires a persistent drive and passion to constantly learn, challenge, and create emotional experiences through a visual language. It thrives with curiosity and collaboration, and survives through innovation and precision.

**THIS IS WHY I LOVE DESIGN.
 I'D LOVE TO HEAR YOUR THOUGHTS.**

